

FA3 Series

The world's smallest Indoor panel-P1.9, P2.6, P2.9, P3.9



Die-casting Aluminum



Light and Thin



Wide Viewing Angle



Flexible Installations



Excellent Performance



13bits ~ 24bits



1,920Hz ~ 3,840Hz

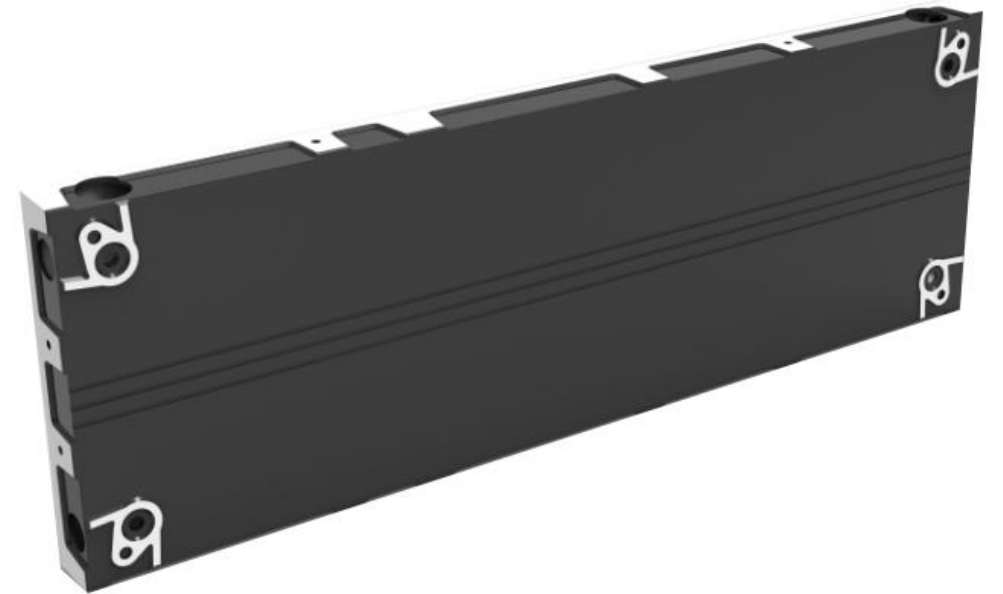


Fully Front Access

Die-Casting Aluminum Design

As customers have higher requirements for LED displays, more and more cabinets have been developed to meet market demands.

Compared with the traditional bulky cabinet, the die-casting aluminum cabinet with humanized design is stronger, more light-weight and precise. This LED panel is highly praised for better user experience. The pixel pitches of this LED screen are SMD P1.9, P2.6, P2.9 and P3.9.





Front Access Design

All electrical components: power supply, receiving card, and data cable are easily accessed from the front of the FA3 LED display. This design feature allows for direct wall mount installation.

Ultra-thin and ultra-light features

The FA3 LED display cabinet is 42mm (1.65") thick
The LED display cabinet options weigh 5.5kgs (12.1lbs)
or 2kgs (4.4lbs).

Cabinet depth: 42mm only. It is one of the thinnest
cabinet in the prevailing market, more cost-effective in
installation space and steel structure.



1,000mm×250mm cabinet weight: 5.5kg



250mm×250mm cabinet weight: 2kg

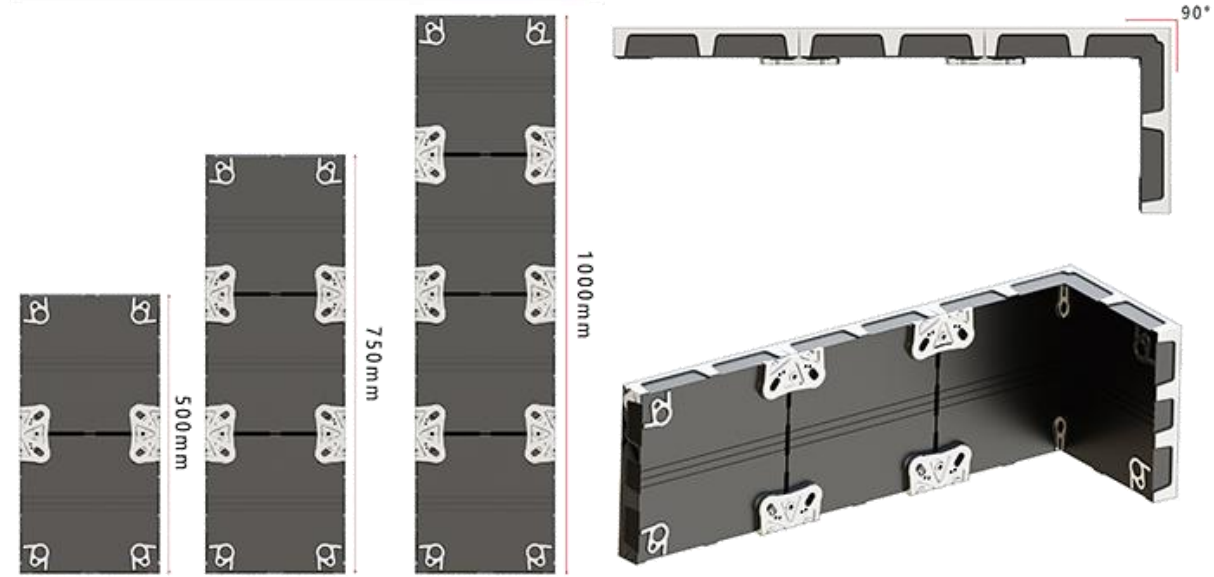


Flexible Installations

Thanks to the excellent cabinet structure design, the installation method is flexible, and the screen can fit well into different projects.

Alternative cabinet size options

The FA3 LED display cabinet is available in two sizes: 1,000mm (39.4") x 250mm (9.8") or 250mm (9.8") x 250mm (9.8"). This world's smallest cabinet size provides flexibility when selecting your final LED display size. The FA3 LED display cabinets can be assembled at seamless 90° angles.





Advanced Visual Performance

Gold aspect ratio: 4:3/16:9

Customized resolution: 1080p, 2K, 4K, 8K, etc.

Wide Viewing Angle: up to 160°

They're achieved by an industry setting display refresh rate of 3,840Hz combined with a Grey Scale performance that reaches 24bits luminance intensity.

Multiple Functions

This indoor LED panel is usually be used for:

- Fashion shop;
- Meeting room video wall;
- Church digital screen;
- Indoor advertising;
- Airport, etc.



FA3 Parameters

Item	P1.9	P2.6	P2.9	P3.9
Pixel Pitch	1.953mm	2.604mm	2.976mm	3.906mm
LED Type	SMD1515/ SMD1415(outdoor)	SMD1515 / SMD1415(outdoor)	SMD2020 / SMD1415(outdoor)	SMD2020 / SMD1921(outdoor)
Module Resolution	128dots x128dots	96dots x 96dots	84dots x 84dots	64dots x 64dots
Driving Mode	1/32scan	1/32scan	1/28scan	1/16scan
Module Pixels	1,6384dots	9,216dots	7,056dots	4,096dots
Module Size	250mm x250mm	250mm x 250mm	250mm x 250mm	250mm x 250mm
Cabinet Size	1000mm x 250mm or 250mm x 250mm or 750mm x 250mm	1000mm x 250mm or 750mm x 250mm or 250mm x 250mm	1000mm x 250mm or 250mm x 250mm or 750mm x 250mm	1000mm x 250mm or 250mm x 250mm or 750mm x 250mm
Cabinet Resolution	512dotsx 128dots or 128dotsx 128dots	384dotsx 96dots or 96dotsx 96dots	336dotsx 84dots or 84dotsx 84dots	256dotsx 64dots or 64dotsx 64dots
Pixel Density	262,144dots/m ²	147,456dots/m ²	112,896dots/m ²	65,536dots/m ²
Minimum Viewing Distance	≥1.9 m	≥2.6 m	≥2.9 m	≥3.9m
Brightness	800nits~1,200nits / 2,000nits	800nits~1,200nits / 2,000nits	800nits~1,200nits / 2,000nits	800nits~1,200nits / 2,000nits
IP Grade	IP43	IP43	IP43	IP43
Refresh Rate	1,920Hz~3,840Hz	1,920Hz~3,840Hz	1,920Hz~3,840Hz	1,920Hz~3,840Hz
Gray Scale	14bits~24bits	14bits~24bits	14bits~24bits	14bits~24bits
Viewing Angle	H:110° / V:110°	H:110° / V:110°	H:110° / V:110°	H:110° / V:110°
Maximum Power Consumption	500W/ m ²	450W/ m ²	350W/ m ²	300W/ m ²
Average Power Consumption	160W/ m ²	150W/ m ²	115W/ m ²	100W/ m ²
Screen Lifespan	≥100,000 hours	≥100,000 hours	≥100,000 hours	≥100,000 hours
Input Voltage	AC110V - AC220V @ 50Hz/60Hz	AC110V - AC220V @ 50Hz/60Hz	AC110V - AC220V @ 50Hz/60Hz	AC110V - AC220V @ 50Hz/60Hz
Operating Temperature	- 20℃~50℃	- 20℃~50℃	- 20℃~50℃	- 20℃~50℃
Operating Humidity	10%~90%	10%~90%	10%~90%	10%~90%
Cabinet Material	Die-casting Aluminum	Die-casting Aluminum	Die-casting Aluminum	Die-casting Aluminum
Cabinet Weight	5.5kg/panel	5.5kg/panel	5.5kg/panel	5.5kg/panel
Operating System	Windows (Win7, Win10, etc.)	Windows (Win7, Win10, etc.)	Windows (Win7, Win10, etc.)	Windows (Win7, Win10, etc.)
Signal Source Compatibility	DVI,HDMI1.3,DP1.2,SDI,HDMI2.0,etc.	DVI,HDMI1.3,DP1.2,SDI,HDMI2.0,etc.	DVI,HDMI1.3,DP1.2,SDI,HDMI2.0,etc.	DVI,HDMI1.3,DP1.2,SDI,HDMI2.0,etc.